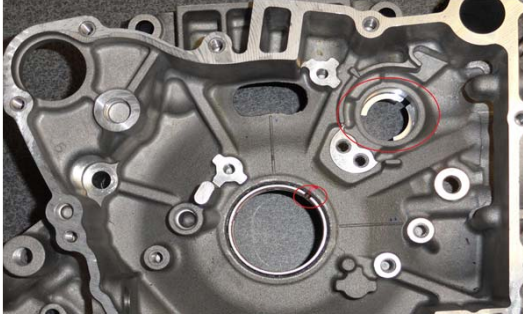
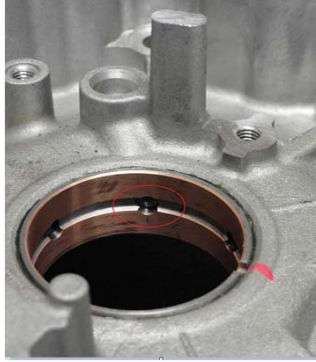


INSTALLATION CHECK FOR K075

1. Due to installation of the plain bearing, it is necessary to keep the timing angle of the bearing. Notch of the plain bearing must be in the direction of counter balancer shaft hole.

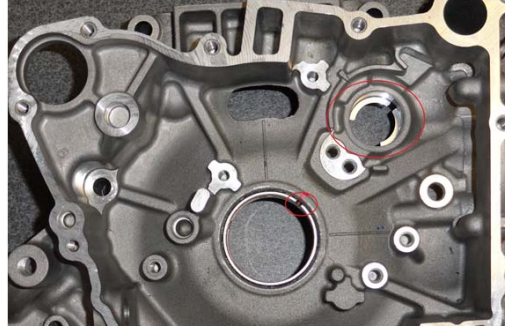


2. Be sure that oil passage in the engine case is not blocked.



INSTALLATION CHECK FOR K075

1. Due to installation of the plain bearing, it is necessary to keep the timing angle of the bearing. Notch of the plain bearing must be in the direction of counter balancer shaft hole.

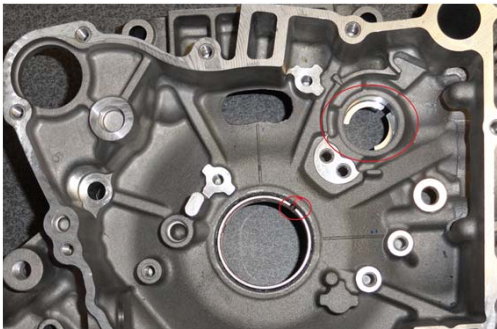


2. Be sure that oil passage in the engine case is not blocked.



INSTALLATION CHECK FOR K075

1. Due to installation of the plain bearing, it is necessary to keep the timing angle of the bearing. Notch of the plain bearing must be in the direction of counter balancer shaft hole.

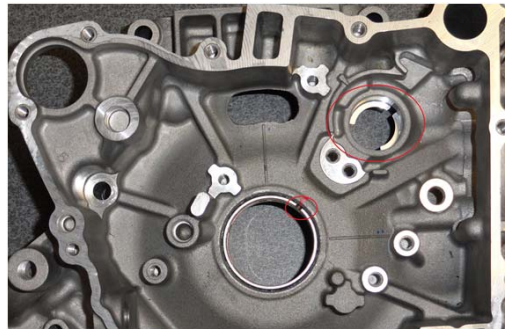


2. Be sure that oil passage in the engine case is not blocked.



INSTALLATION CHECK FOR K075

1. Due to installation of the plain bearing, it is necessary to keep the timing angle of the bearing. Notch of the plain bearing must be in the direction of counter balancer shaft hole.



2. Be sure that oil passage in the engine case is not blocked.

